

COUNTY OFFICES

Southern California

RECORDER • COUNTY CLERK • TAX COLLECTOR
ASSESSOR • TREASURER



LOS ANGELES COUNTY

County of Los Angeles Registrar-Recorder/County Clerk (Main Office)

12400 Imperial Hwy., Rm. 2001,
Norwalk 90650
Phone: (562) 462-2125
Website: <http://lavote.net> or
<http://rrcc.lacounty.gov>

LA County Branch Offices

LAX Courthouse

11701 S. La Cienega Bl. 6th Floor
Los Angeles, CA 90045
Phone: (310) 727-6142

Lancaster District Office

1028 W. Avenue J2
Lancaster, CA 93534
Phone: (661) 945-6446

Van Nuys District Office

14340 West Sylvan Street
Van Nuys, CA 91401
Phone: (818) 376-3777

Los Angeles County Treasurer and Tax Collector

225 N. Hill Street
Los Angeles, CA 90012
Toll-Free No.: (888) 807-2111
Email: info@ttc.lacounty.gov

ORANGE COUNTY

Orange County Clerk-Recorder (Main Office)

Hall of Records and Finance
12 Civic Center Plaza
Santa Ana, CA 92071
Phone: (714) 834-2500
www.ocrecorder.com

Old Orange County Courthouse

211 West Santa Ana Blvd.
Santa Ana, CA 92701

South County Branch Office

Laguna Hills Civic Center
24031 El Toro Road, Suite 150
Laguna Hills, CA 92653

North County Branch Office

Downtown Fullerton
201 N. Harbor Blvd.
Fullerton, CA 92832

Orange County Treasurer- Tax Collector

625 North Ross St., Building 11
Santa Ana, CA 92701
Phone: (714) 834-3411
Email: ttcinfo@ttc.ocgov.com
www.tax.ocgov.com/

RIVERSIDE COUNTY

Riverside (Gateway)

2720 and 2724 Gateway Dr.
Riverside, CA 92507
Assessor & County Clerk:
(951) 486-7000
<http://www.riversideacr.com/>

Riverside (Downtown) County Administrative Center

4080 Lemon St., 1st Floor
Riverside, CA 92502
Assessor: (951) 955-6200
County Clerk-Recorder:
(951) 486-7000
<http://www.riversideacr.com/>

Blythe Offices of Assessor County Clerk Recorder

270 N. Broadway
Blythe, CA 92225
Phone: (760) 921-5050
<http://www.riversideacr.com/>

Hemet County Administrative Center

880 N. State, Suite B-6
Hemet, CA 92543
Assessor: (951) 766-2500
County Clerk-Recorder: (951) 486-7000
<http://www.riversideacr.com/>

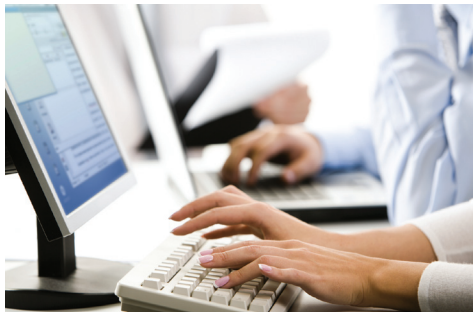


Lawyers Title

Indio
County Administrative Center
82675 Highway 111, Room 113
Indio, CA 92201
Assessor: (760) 863-7800
County Clerk-Recorder:
(760) 863-8732
<http://www.riversideacr.com/>

Temecula
41002 County Center Dr. #230
Temecula, CA 92591
Assessor: (951) 600-6200
County Clerk-Recorder:
(951) 486-7000
<http://www.riversideacr.com/>

**Riverside County Office of the
Treasurer-Tax Collector**
Mailing address:
Riverside County Treasurer
P.O. Box 12005
Riverside, CA 92502-2205
Phone: (951) 955-3900
Email: ttc@co.riverside.ca.us



SAN BERNARDINO COUNTY

**County of San Bernardino
Auditor/Controller-Recorder
Hall of Records**
222 West Hospitality Lane
San Bernardino, CA 92415-0022
General Information: (909) 387-8322
<http://www.sbcounty.gov/>

**San Bernardino County Treasurer
Tax Collector / Public
Administrator**
172 West Third Street, First Floor
San Bernardino, CA 92415-0360
Tax Collection: (909) 387-8308
Treasurer's Office: (909) 387-6375
Public Administrator: (909) 387-6249
www.mytaxcollector.com



SAN DIEGO COUNTY

**San Diego Assessor (Main Office)
County Administration Center**
1600 Pacific Highway, Suite 103
San Diego, CA 92101
Phone: (619) 236-3771
<http://arcc.co.san-diego.ca.us>

**San Diego Recorder/Clerk
(Main Office)
County Administration Center**
1600 Pacific Highway, Suite 260
San Diego, CA 92101
Phone: (619) 238-8158

El Cajon Branch Office
200 S. Magnolia Ave.
El Cajon, CA 92020
Phone: (619) 401-5700

San Marcos Branch Office
141 E. Carmel St.
San Marcos, CA 92078
Phone: (760) 940-6868

**County of San Diego Treasurer/
Tax Collector - Main Office –
County Administration Center**
1600 Pacific Highway - Room 162
San Diego, CA 92101
Phone: (877) 829-4732
Email: taxman@sdcounty.ca.gov
www.sdtreastax.com/

Chula Vista Branch Office
590 Third Ave
Chula Vista, CA 91910
Phone: (619) 498-2293

El Cajon Branch Office
200 South Magnolia Avenue
El Cajon, CA 92020
Phone: (619) 401-5707

San Marcos Branch Office
141 East Carmel Street
San Marcos, CA 92078
Phone: (760) 940-2904

Kearny Mesa Branch Office
9225 Clairemont Mesa Blvd
San Diego, CA 92123
Phone: (858) 505-6060

VENTURA COUNTY

**County of Ventura
County Clerk & Recorder
Hall of Administration,
Main Plaza**
800 S. Victoria Ave.
Ventura, CA 93009-1260
Phone: (805) 654-2263
<http://recorder.countyofventura.org/>

**County of Ventura
Tax Collector**
800 S. Victoria Ave.
Ventura, CA 93039-1290
Phone: (805) 654-3744
www.venturapropertytax.org/

